

Final Report
June 1, 2008
for
Research Grant Award Number 04-G-024
Implementation of the Rotor Manufacturing Induced Anomaly Database

Mohammad Dadashzadeh¹

TECHNICAL DESCRIPTION OF PROJECT AND RESULTS

The research project has produced the following suite of applications that comprise the RoMAN Common Lessons Learned DataBase (LLDB):

- (1) RoMAN OEM Data Entry Application
- (2) RoMAN Common LLDB Export Merge Application
- (3) RoMAN Common LLDB Website Application
- (4) RoMAN Common LLDB Data Analysis Application
- (5) RoMAN Common LLDB Use Audit Trail Application
- (6) RoMAN Common LLDB User Administration Website Application

The applications are hosted and made available at the secured, access controlled FAA website: <http://lldb.tc.faa.gov>

1. RoMAN OEM Data Entry Application

- The latest release is dated February 10, 2008 and is available from the website.



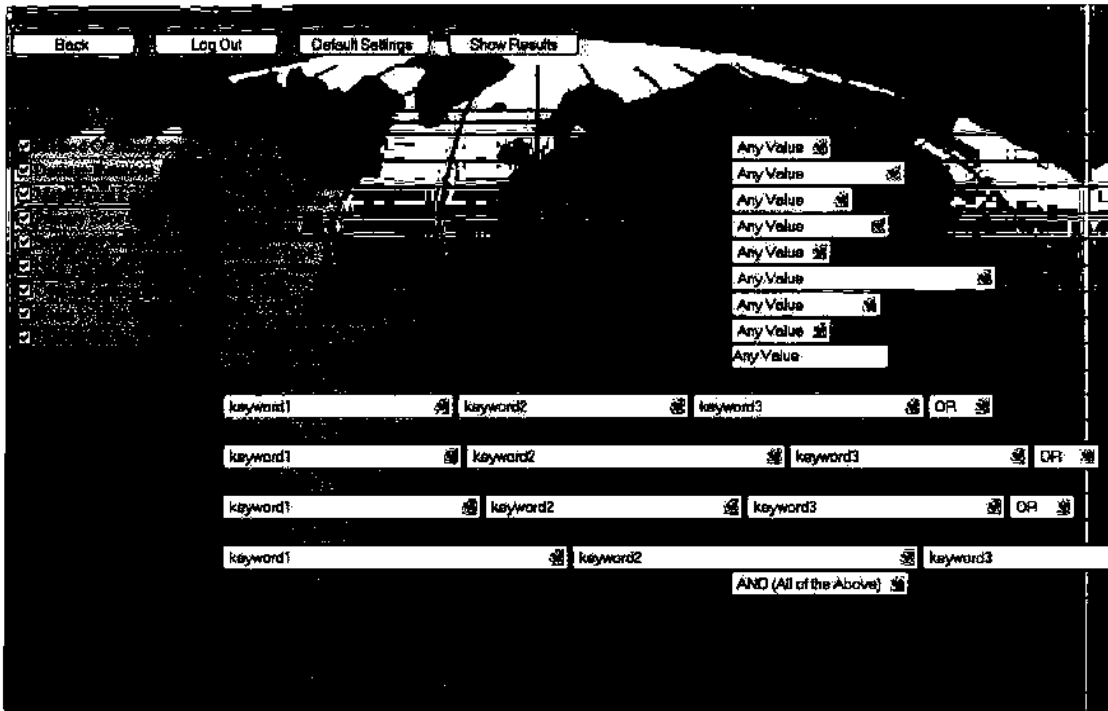
¹ Professor of MIS and Director, Applied Technology in Business (ATiB)
Oakland University, Rochester, MI 48309
248.370.4649

2. RoMAN Common LLDB Export Merge Application

- The latest release is dated July 11, 2007 and is available from the website.
- APPENDIX A provides instructions on “How To Use the RoMAN Common LLDB Export Merge Application With Uploaded Data.”

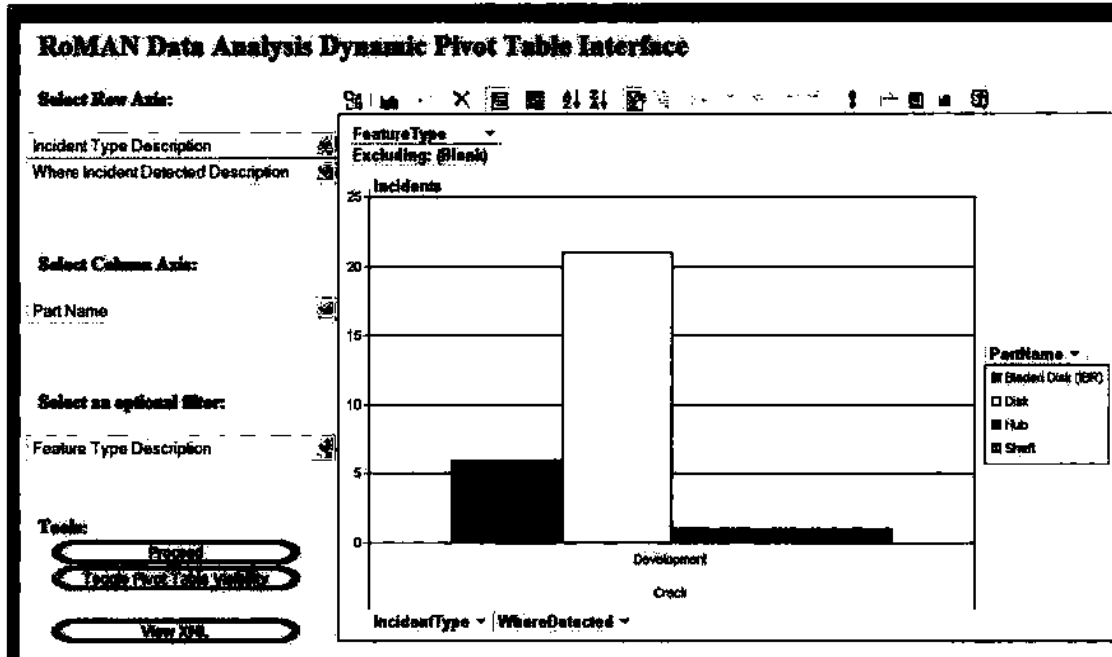
3. RoMAN Common LLDB Website Application

- The latest release implements functionalities requested during the January 2008 RoMAN Meeting.



4. RoMAN Common LLDB Data Analysis Application

- A variety of data analysis applications are available at the website including dynamic pivot charts.



5. ROMAN Common LLDB Use Audit Trail Application

- ❖ The Audit Trail Application is web-based and available to the *admin* user for usage reports.



6. ROMAN Common LLDB User Administration Website Application

- The User Administration Application is web-based and available to *romanadmin* user for user administration.

<http://lldb.tc.faa.gov/admin/default.asp>

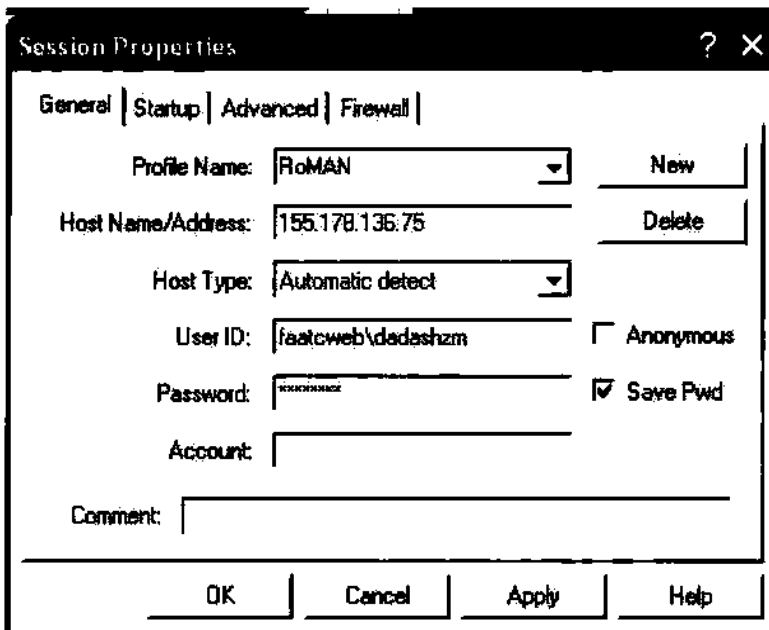
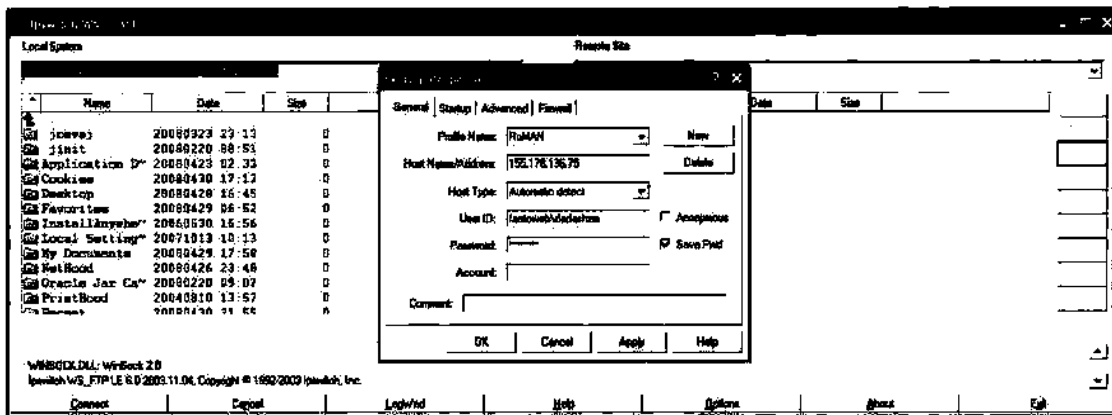
APPENDIX A

How To Use the RoMAN Common LLDB Export Merge Application With Uploaded Data

by
Mohammad Dadashzadeh

April 30, 2008

Step 1. Use an FTP client to see if there are any files uploaded to the RoMAN Website. The screen shots below use Ipswith WS_FTP LE software.



Step 2. Download the OEM's uploaded data to your local PC.

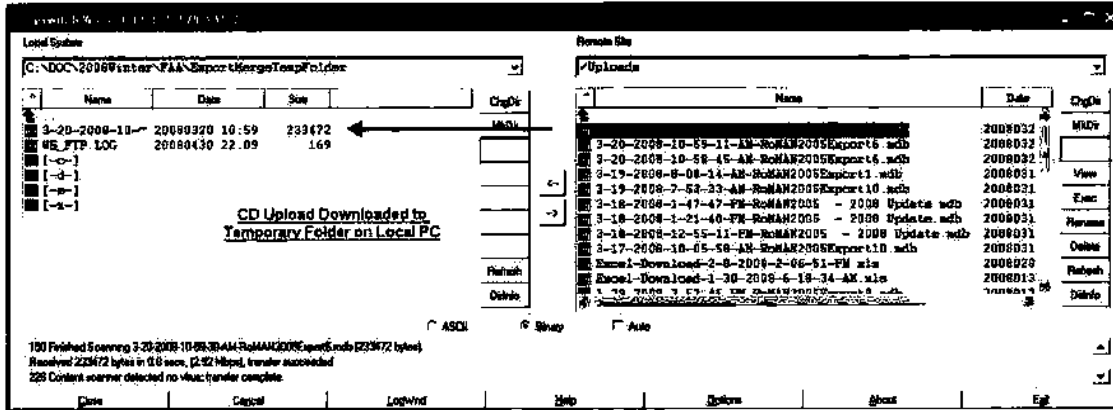
Remote Site

Name	Date	Size	ChgDir
..			
admin	20050515 19:31	0	MkDir
Administratio~	20070122 16:29	0	
AlloyXFeature~	20060703 17:04	0	
aspnet_client	20071023 14:49	0	
images	20060913 07:46	0	
Include_Files	20070601 12:25	0	
Invalid	20041220 12:52	0	
OLD	20050321 09:11	0	
Page_files	20060124 17:10	0	
RoMAN	20060124 07:12	0	
Uploads	20080320 10:59	0	
Alloys.asp	20060722 11:26	2561	Refresh
Alloys2.asp	20060914 04:58	21217	DirInfo

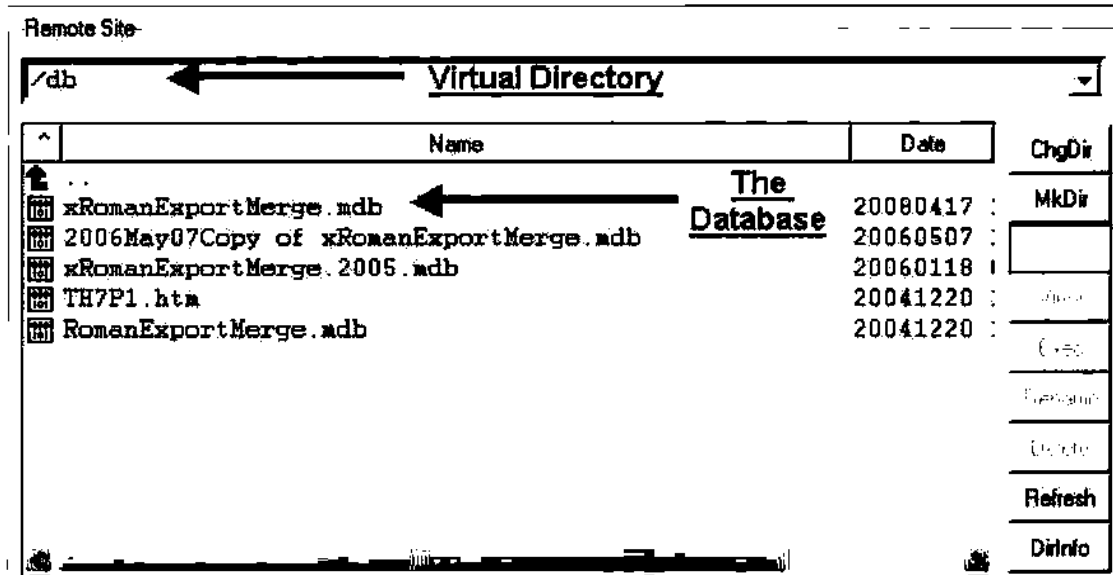
Remote Site

Uploads **New CD Upload**

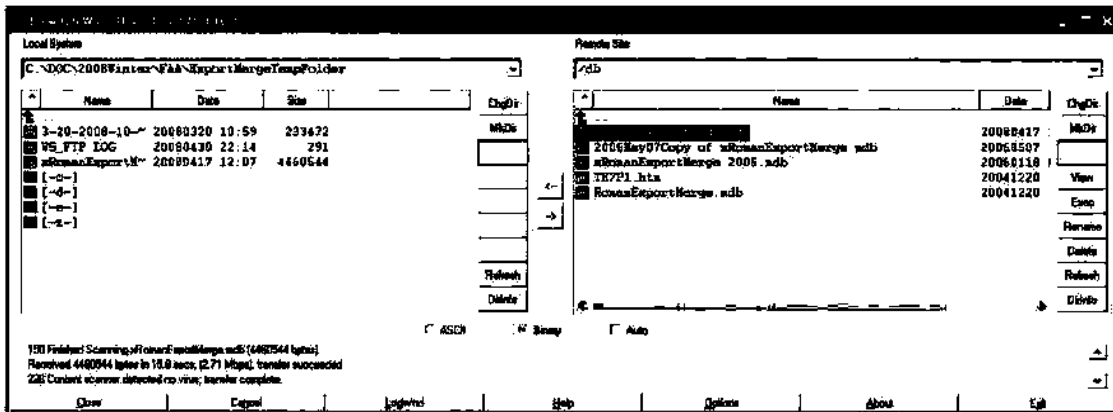
Name	Date	ChgDir
..		
3-20-2008-10-59-30-AM-RoMAN2005Export6.mdb	2008032	MkDir
3-20-2008-10-59-11-AM-RoMAN2005Export6.mdb	2008032	
3-20-2008-10-58-45-AM-RoMAN2005Export6.mdb	2008032	
3-19-2008-8-08-14-AM-RoMAN2005Export1.mdb	2008031	
3-19-2008-7-53-33-AM-RoMAN2005Export10.mdb	2008031	
3-18-2008-1-47-47-PM-RoMAN2005 - 2008 Update.mdb	2008031	
3-18-2008-1-21-40-PM-RoMAN2005 - 2008 Update.mdb	2008031	
3-18-2008-12-55-11-PM-RoMAN2005 - 2008 Update.mdb	2008031	
3-17-2008-10-05-58-AM-RoMAN2005Export10.mdb	2008031	
Excel-Download-2-8-2008-2-06-51-PM.xls	2008020	
Excel-Download-1-30-2008-6-18-34-AM.xls	2008013	Refresh
1-20-2008-2-02-45-PM-RoMAN2005Export6.mdb	2008012	DirInfo



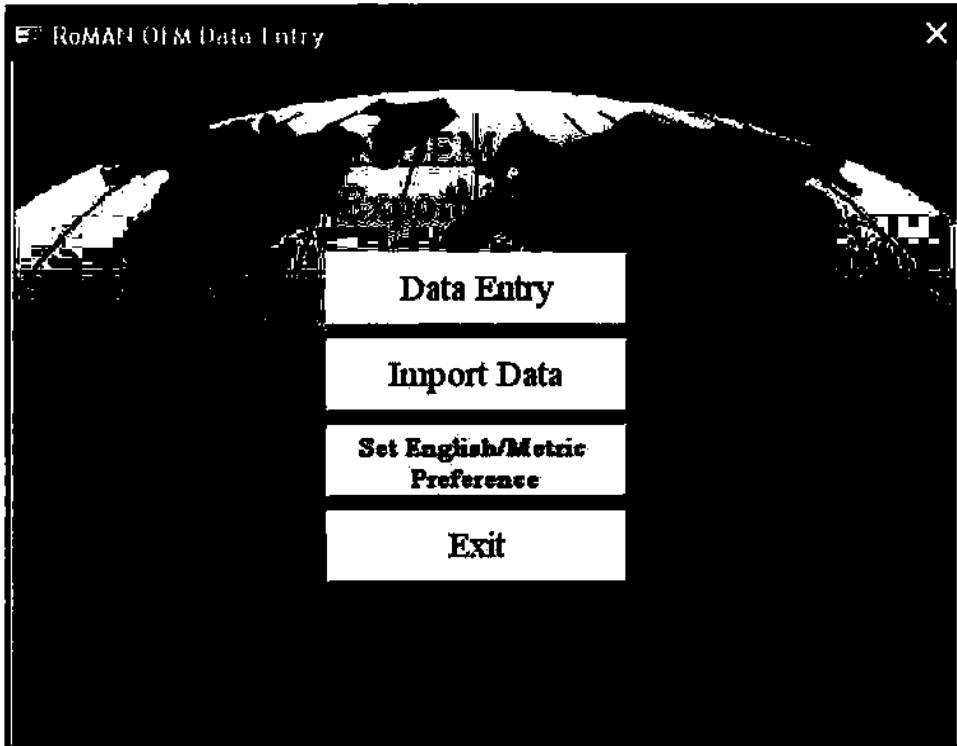
Step 3. Download the Common LLDB database.



The downloaded files:



Step 4. Start Microsoft Access and open the downloaded **xRomanExportmerge.MDB** file.



Click Import Data:



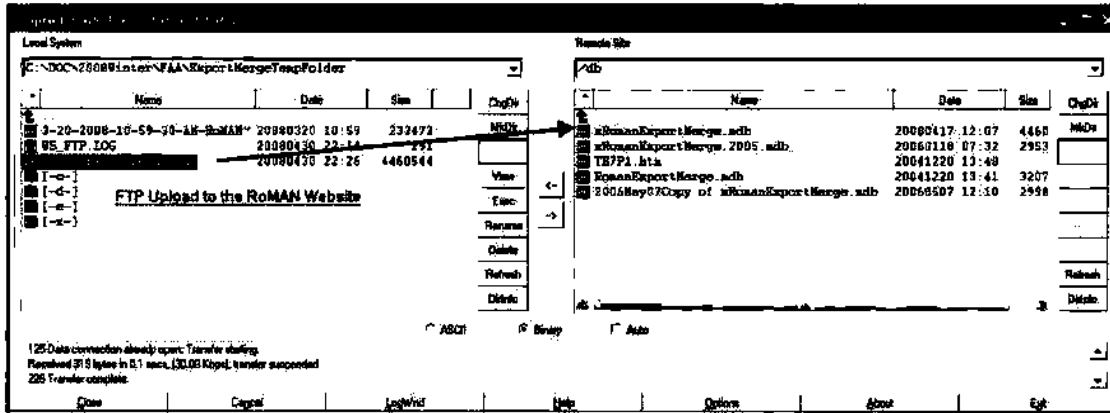
Click Import:



The message box signifies that the OEM Export File had no new records introduced, but 5 old records were updated in the Common LLDB.

We can repeat this for each uploaded file. In this example, we assumed there was only one such file. EXIT the Access database when done.

Step 5. Upload the xRomanExportmerge.MDB file to the db virtual directory of the RoMAN Website.



Step 6. Delete the temporary files on the local PC.

That's it.